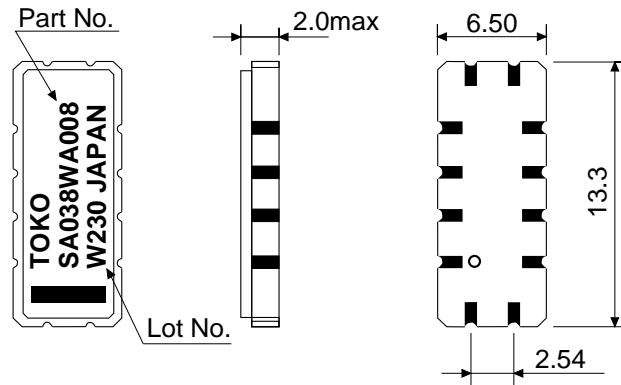


1. Overall Dimensions



Unit: mm

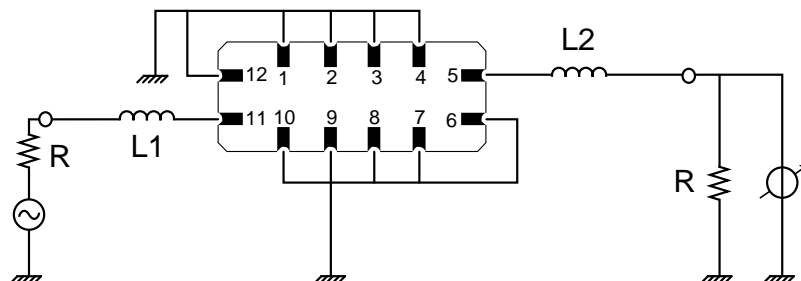
- Input : 11
- Return : 12
- Output : 5
- Return : 6
- Ground : 1,2,3,4,7,8,9,10

Tolerance: ±0.2

2. Electrical Characteristics

2.1	Center Frequency (Fo)	:	38.912 MHz
2.2	Passband Width ( Ref. Fo )	3.0 dB	: ± 0.610 MHz min.
		7.0 dB	: ± 0.768 MHz min.
2.3	Stopband Attenuation (Ref. to Min. Loss )	10.0 MHz ... 37.312 MHz	: 38 dB min
		40.512 MHz ... 48 MHz	: 38 dB min
2.4	Passband Ripple	:	0.7 dB max @ Fo ± 0.350 MHz
2.5	Minimum Loss	:	25.0 dB max.
2.6	Group Delay Deviation	:	±50 nsecs p/p max at Fo ± 0.350 MHz
2.7	Maximum Input Power	:	10 dBm
2.8	Operation Temperature	:	25°C
2.9	Load Impedance	Source	: 50.0 Ω    -0.93 pF
		Load	: 50.0 Ω    -0.95 pF

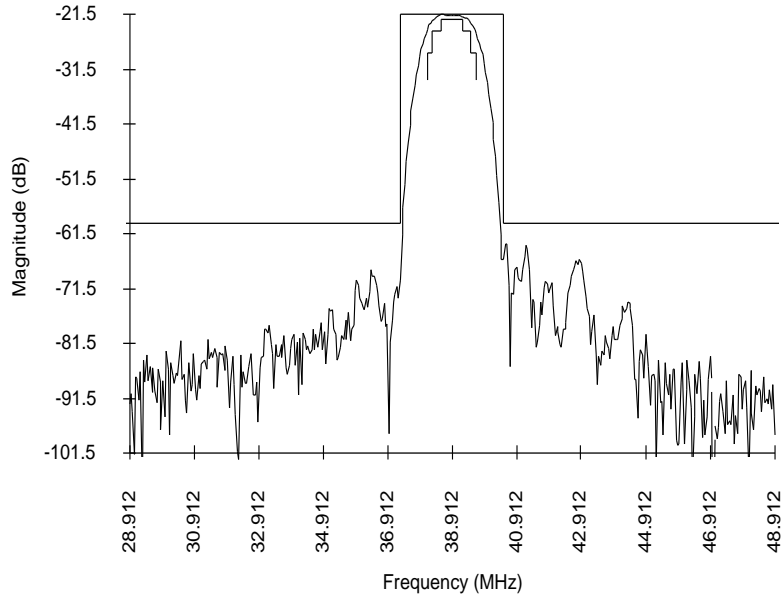
3. Test Circuit



- R = 50 Ω
- L1 = 2.2 μH
- L2 = 2.2 μH

4. Sample Data

Typical Response



Typical Passband Response

